

Evoked Potential (EP) testing

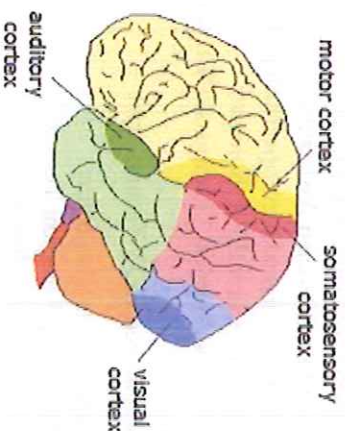
measures electrical activity of the brain, spinal nerves, and sensory receptors in response to external stimulation of certain sensory nerve pathways. EPs record the time of nerve response to stimulation and measure the size of response.

During EP testing, electrodes are attached to the scalp and other areas of the body, and a series of stimuli is introduced. Such testing is not painful. EPs may be useful in evaluating a number of different neurologic disorders, including:

- Spinal cord injuries
- Multiple sclerosis and other neurologic diseases in which the protective covering surrounding nerve fibers (myelin sheath) is damaged, impairing conduction of signals in the affected nerves (demyelinating disorders)
- Benign tumors of the nerve that connects the ear to the brain (acoustic neuromas)
- Demyelinating inflammation of the optic nerve (optic neuritis)

Visual Evoked Potential (VEP)

VEP assesses brainwave activity related to the nerves that comprise the visual pathways. During VEP testing, brainwaves are recorded while the patient views a pattern on a video screen. VEP testing takes approximately half an hour.

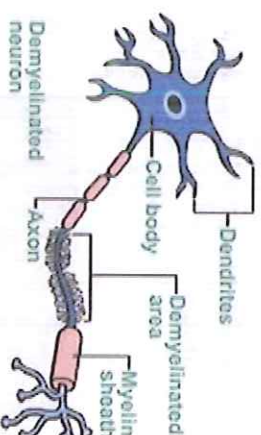


Brainstem Auditory Evoked Response (BAER)

BAER measures how the brain processes sounds, evaluating the electrical activity that occurs in auditory nerve pathways from the ears through the brainstem. During BAER testing, brainwaves are recorded in response to clicks or other audio tones that are delivered via earphones to each ear separately. Testing takes approximately half an hour.

Somatosensory Evoked Potential (SSEP)

SSEP assesses pathways from nerves in the arms or legs, through the spinal cord, to the brainstem or cerebral cortex. During SSEP testing, short electrical impulses are administered to the skin over the nerves on the arms or legs. The stimulation creates a tingling sensation, but is not painful. Each leg or arm is tested separately. SSEP testing takes approximately 1 hour.



Instructions for EPs

- **VER:** Please be sure to bring your glasses for your visit.
- **BAER:** No specific instructions are necessary.
- **SSEP:** Please wear loose-fitting separates to prevent the need to wear a hospital gown, and do not wear a dress, jeans, or pantyhose for your visit. Also, do not have lotions, oils, or gels on your arms or legs.

Neurophysiology Staff



Robert Bonwetsch, M.D.
 Diplomate ABPN in Neurology
 Diplomate ABPN in Added Qualifications in Clinical Neurophysiology



Paulette Christie, R. EEG T.
 Neurophysiology Director
 EEG Technologist

Associated Neurologists, P.C. offers patients advanced diagnostic and treatment services for all neurological conditions. Our providers are available for consultations and second opinions as well as ongoing management of chronic neurological and rehabilitative needs. We treat adults, adolescents, children, and infants. Our patients receive compassionate, quality care from our highly trained neurological staff. Associated Neurologists' main office is in Danbury, and we also have satellite offices in Southbury, Waterbury, and New Milford, Connecticut.

Our practice includes:

- Board-Certified Neurologists
- Certified Physician Assistants
- Licensed Clinical Neuropsychologists
- Licensed Clinical Psychologists
- Licensed Physical Therapists (PTs) and PT Assistants
- Registered EEG Technologist

Our specialists also offer:

- Neuropsychological Testing
- Behavioral Medicine
- Physical Therapy
- Balance Testing and Vestibular Therapy
- Comprehensive Concussion Management
- EMGs

We also conduct a wide range of clinical studies that explore new research treatments for many neurological conditions. Please contact our office and visit our website for information on research studies that are currently enrolling.



Associated Neurologists, P.C.
 Danbury • Southbury • Waterbury • New Milford, CT

Danbury office:
 69 Sand Pit Road
 Danbury, CT 06810
 Phone: 203-748-2551
 Fax: 203-790-6375

Southbury office:
 22 Old Waterbury Road
 Suite 106
 Southbury, CT 06488
 Phone: 203-262-4270

Waterbury office:
 1389 West Main Street
 Tower 1, Suite 212
 Waterbury, CT 06708
 Phone: 203-755-7367

New Milford office:
 1 Old Park Lane, Unit 3
 New Milford, CT 06776
 Phone: 860-350-3151
 Fax: 860-350-3119



Associated Neurologists, P.C.
 Danbury • Southbury • Waterbury • New Milford, CT

Evoked Potential (EP) Testing

Test Type(s): _____

VEP BAER SSEP

Appointment Date: _____

Appointment Time: _____

Questions about your appointment?
 Contact us at (203) 748-2551,
 extension 372.

- Please do not bring children with you who are not being tested.
- MINORS need to be accompanied by an adult.
- Patients will receive an appointment reminder call 2 days before scheduled appointments.
- A prescription order is needed to perform testing.
- Evoked potential results are available in 2 business days.